



Sitecore CMS 6.1

Client Configuration

Cookbook

Features, Tips and Techniques for CMS Architects and Developers

Table of Contents

Chapter 1	Introduction.....	5
Chapter 2	Common Procedures	6
2.1	Common Procedures	7
2.1.1	How to Select a Database in the Sitecore Desktop	7
2.1.2	How to Show or Hide the Standard Fields	7
2.1.3	How to Show or Hide Raw Values	7
2.1.4	How to Show or Hide the Developer Tab.....	7
2.1.5	How to Copy the ID or Path of an Item to the Windows Clipboard	8
2.1.6	How to Enter a Class Signature	8
Chapter 3	Data Templates and Items	9
3.1	Item Appearance	10
3.1.1	Icons	10
How to Set the Icon for an Item.....	10	
How to Set the Default Icon for All Items Based on a Data Template	11	
How to Change the Default Icon for All Items	11	
How to Configure the Icon Selection Menu.....	11	
3.1.2	Hidden Items	11
How to Show or Hide Hidden Items	11	
How to Show or Hide an Item	11	
3.1.3	Protected Items	12
How to Protect or Unprotect an Item.....	12	
3.1.4	Item Styles.....	12
How to Configure the Style of an Item Name in the Content Tree.....	12	
3.1.5	Display Name.....	13
How to Set the Display Name for an Item	14	
3.1.6	Context-Sensitive Help.....	14
How to Set Item Context-Sensitive Help	14	
3.2	Data Template Sections	15
3.2.1	Data Template Section Icons	15
3.2.2	How to Set a Data Template Section Icon	15
3.2.3	Data Template Section Sort Order.....	15
How to Sort Data Template Sections	16	
How to Set the Sort Order Property of a Data Template Section Definition Item	16	
3.3	Data Template Fields	17
3.3.1	Data Template Field Headers and Context-Sensitive Help	17
How to Set the Title for a Data Template Field.....	17	
How to Set Context-Sensitive Help for a Data Template Field	17	
3.3.2	How to Style a Data Template Field.....	17
3.3.3	Data Template Field Sort Order	18
How to Sort Data Template Fields	18	
How to Set the Sort Order Property of a Data Template Field Definition Item	18	
3.3.4	Rich Text Editor (RTE) Configuration.....	18
RTE Profile Definition Item Reference	19	
How to Configure RTE Profiles	19	
How to Determine the Path to an RTE Profile	20	
How to Set the Profile for an RTE Template Field Definition Item	20	
How to Add Features to an RTE Profile	20	
How to Set the CSS Used by RTE Fields	20	
How to Limit the CSS Styles Visible in RTE Fields.....	20	
How to Configure the RTE HTML Element Types Drop-Down Menu.....	21	

- How to Enable Snippets in an RTE Profile 21
- How to Add a Snippet to an RTE Profile 21
- How to Control the Markup Inserted by the Enter Key..... 22
- How to Disable the RTE HTML Tab for Some or All Users 22
- 3.4 Custom User Interfaces in Data Templates 23
 - 3.4.1 The IFrame Field Type 23
 - How to Create an IFrame Data Template Field 23
 - 3.4.2 Item Editors 23
 - How to Configure Item Editors 24
 - How to Create an Item Editor..... 25
- 3.5 Insert Options 26
- Chapter 4 Data Validation 27
 - 4.1 Validation Overview 28
 - 4.2 Types of Validation..... 29
 - 4.2.1 Data Template Field Validation 29
 - 4.2.2 Field Type Validation..... 29
 - 4.2.3 Item Validation..... 29
 - 4.2.4 Standard Validation 29
 - 4.2.5 Global Item Validation 29
 - 4.3 Validation Error Levels 30
 - 4.4 Configuring Validation Rules..... 31
 - 4.4.1 How to Configure Quick Action Bar Validation Rules 31
 - 4.4.2 How to Configure Validate Button Validation Rules..... 31
 - 4.4.3 How to Configure Validation Bar Validation Rules..... 31
 - 4.4.4 How to Configure Workflow Validation Rules 31
 - 4.4.5 How to Create a Workflow Command or State Validation Action 31
 - 4.4.6 How to Configure Validation Rules for All Instances of a Data Template Field Type 32
 - 4.4.7 How to Configure Validation Rules for All Items: 32
 - 4.4.8 How to Configure Validation Rules for an Individual Item or All Items Based on a Specific Data Template 32
 - 4.4.9 How to Configure Validation Rules for a Specific Data Template Field 33
 - 4.4.10 Default Item Validators..... 33
 - 4.4.11 Default Field Validators 33
 - 4.5 Registering Validators 35
 - 4.5.1 How to Register a Validator 35
 - 4.5.2 How to Register a Regular Expression Field Validator 35
 - 4.5.3 How to Register an Integer Field Validator 35
 - 4.5.4 How to Register an Integer Range Field Validator..... 36
 - 4.5.5 How to Register a Maximum Length Field Validtor 36
 - 4.5.6 How to Register Validators for Specific Items and Items Based on Specific Templates 36
 - 4.5.7 How to Disable Default Validation Rules 36
 - 4.5.8 How to Override the Default Error Level for a Validator..... 37
 - 4.6 Custom Validators..... 38
 - 4.6.1 How to Implement a Custom Validator 38
 - 4.6.2 How to Implement a Custom Validator 38
 - 4.7 Validation Actions..... 40
 - 4.7.1 How to Create a Validation Action 40
 - 4.7.2 How to Use a Validation Action..... 41
- Chapter 5 The Page Editor 42
 - 5.1 Page Editor Overview 43
 - 5.1.1 The Design Pane of the Page Editor 43
 - 5.2 Placeholder Settings 44
 - 5.2.1 How to Create a Placeholder Settings Definition Item 45
 - 5.2.2 How to Configure Placeholder Settings for a Data Template or an Individual Item..... 45

- 5.3 Page Editor Modes..... 46
 - 5.3.1 How to Determine the Page Editor Mode 46
 - 5.3.2 Page Editor Modes..... 46
- 5.4 Edit Frames..... 48
 - 5.4.1 How to Implement an Edit Frame Menu Command..... 49
 - 5.4.2 How to Define an Edit Frame Menu 49
 - 5.4.3 How to Insert an Edit Frame in a Layout or Sublayout 50
 - 5.4.4 How to Insert an Edit Frame in an XSL Rendering 50
 - 5.4.5 Edit Frame Properties 50
- 5.5 The Field Editor 51
 - 5.5.1 How to Use the Default Field Editor 52
 - 5.5.2 How to Implement a Custom Field Editor 52
- Chapter 6 Security Based Configuration Features 54
 - 6.1 Sitecore Client Security Roles..... 55
 - 6.2 Security Presets 57
 - 6.2.1 How to Create a Security Preset..... 57
 - 6.2.2 How to Apply a Security Preset..... 57
 - 6.3 Data Template Field Security..... 59
 - How to Configure Data Template Field Security..... 59

Chapter 1

Introduction

This cookbook provides information, tips, and techniques for CMS architects and developers to optimize Sitecore client user interface usability.¹

This document contains the following chapters:

- Chapter 1 — Introduction
- Chapter 2 — Common Procedures
- Chapter 3 — Data Templates and Items
- Chapter 4 — Data Validation
- Chapter 5 — The Page Editor
- Chapter 6 — Security Based Configuration Features

¹ For client hardware requirements, see the Installation guide at <http://sdn.sitecore.net/Products/Sitecore%20V5/Sitecore%20CMS%206/Installation.aspx>. For instructions to configure Internet Explorer, see the Internet Explorer Configuration Reference manual at <http://sdn.sitecore.net/Reference/Sitecore%206/IE%20Configuration%20Reference.aspx>.

Chapter 2

Common Procedures

This chapter provides instructions for common procedures required by other procedures described in this and other documents.

This chapter contains the following section:

- Common Procedures

2.1 Common Procedures

This section provides instructions for common procedures required by other procedures described in this and other documents.

2.1.1 How to Select a Database in the Sitecore Desktop

To select a database in the Sitecore Desktop:

1. In the browser, access the Sitecore login page, such as <http://localhost/sitecore>.
2. In the browser, in the Sitecore login page, click the Advanced tab, then click the Desktop option, and then Log in as an administrator. The Sitecore desktop appears in the browser.
3. In the browser, in the Sitecore desktop, in the lower right corner, click the database icon, and then click the database name. The Sitecore desktop refreshes, closing any open applications. If you open the Content Editor or other applications within the Sitecore desktop, they will access the database you selected until you log out or select a different database.

Important

To reduce the potential for making changes to a database unintentionally, always select the master database after working with one of the other databases.

Important

Unless otherwise specified, all procedures in this and other Sitecore documentation assume that you have selected the master database.

2.1.2 How to Show or Hide the Standard Fields

To show or hide the standard fields:

1. In the Template Manager or the Content Editor, click the View tab.
2. In the Template Manager or the Content Editor, in the View group, and then select or clear the Standard Fields checkbox.

Note

Showing the standard fields can affect user interface performance.

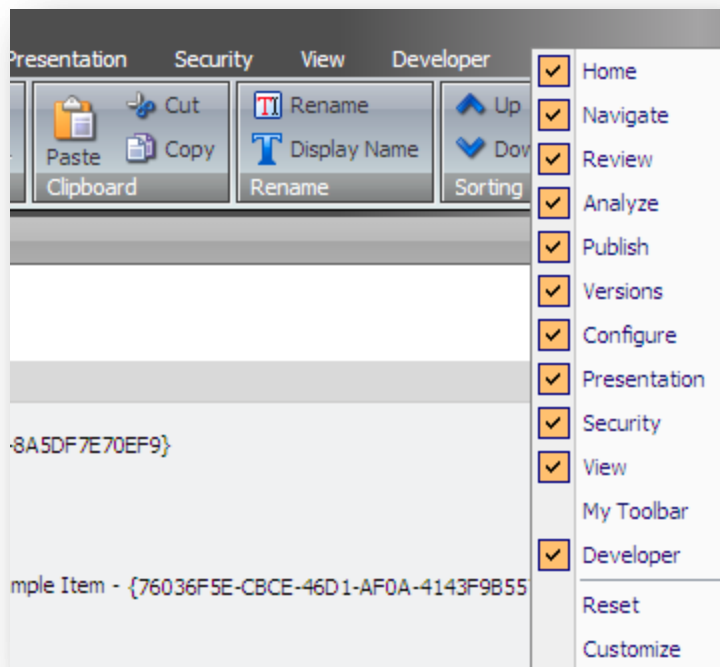
2.1.3 How to Show or Hide Raw Values

You may investigate the text value of a field by viewing its raw value. For example, you may view raw values to determine the attributes of a field such as image that stores a single XML element.

To show or hide raw values, in the Template Manager or the Content Editor, click the View tab, and then in the View group, select or clear the Raw Values checkbox.

2.1.4 How to Show or Hide the Developer Tab

The Developer tab provides convenience features for developers working with Sitecore solutions. To show or hide the Developer tab, in the Content Editor, right-click the tabstrip, and then click the Developer option.



2.1.5 How to Copy the ID or Path of an Item to the Windows Clipboard

To copy the path to an item to the Windows clipboard:

1. In the Template Manager or the Content Editor, select the item, and then click the Content tab.
2. In the Quick Info section, click and drag the mouse across the value of the ID or Item Path property. To copy the path to the Windows clipboard, press CTRL-C, or right-click the selected text and then select copy.

Tip

You can also copy the ID or path to an item by using the ID and Path commands in the Show group on the Developer tab. For more information about the Developer tab, see the section How to Show or Hide the Developer Tab.

2.1.6 How to Enter a Class Signature

A class signature identifies a class in a .NET assembly.

To enter a class signature:

1. Enter the following prototype:

```
Namespace.Class, Assembly
```

2. Replace `Namespace` with the namespace containing the class.
3. Replace `Class` with the name of the class.
4. Replace `Assembly` with the name of the assembly containing the class, without the `.dll` extension.

Chapter 3

Data Templates and Items

This chapter provides tips and describes techniques for configuring data templates and items, including controlling item, section, and field appearance, custom item editors, and insert options.

This chapter contains the following sections:

- Item Appearance
- Data Template Sections
- Data Template Fields
- Custom User Interfaces in Data Templates
- Insert Options

3.1 Item Appearance

You can use the following features to control the appearance of items in the content tree. A field in the standard template defines the icon for each item.

3.1.1 Icons

Sitecore user interfaces, including the content tree in the Content Editor, display an icon next to each item.

Developers use icons:

- To differentiate specific items visually.
- To differentiate items based on specific templates visually.

If an item does not specify an icon, the content tree displays the icon specified in data template associated with the item. If that data template does not specify an icon, then the content tree displays the icon specified by the `value` attribute of the `/configuration/sitecore/settings/setting` element in `web.config` with name `DefaultIcon`.

Note

Sitecore supports theming. Sitecore interprets relative icon paths as relative to the `/sitecore/shell/themes/standard` directory. For example, the value `applications/16x16/star_yellow.png` is equivalent to `/sitecore/shell/themes/standard/applications/16x16/star_yellow.png`.

Note

An icon can be an arbitrary URL of an image.

How to Set the Icon for an Item

To set the icon for an item:

1. In the Content Editor, edit the item.
2. Click the Configure tab.
3. In the Appearance group, click the Icon command. An icon selection menu appears.
4. In the icon selection menu, select an icon, or click More Icons and use the icon selection dialog.

Note

The icon selection dialog may load slowly when presenting a large number of images in a single directory.

Tip

As a shortcut to access the icon selection dialog, in the editing pane, click the Content tab, and then click the icon in the item title bar.

Important

Rather than setting the icon for individual items, set the icon for each data template to apply that icon to the data template, its standard values item, and all other items based on that template.

How to Set the Default Icon for All Items Based on a Data Template

To set the default icon for all items based on a data template:

1. In the Template Manager, edit the data template definition item.
2. Set the icon in the data template definition item as described in the section How to Set the Icon for an Item.

Important

Set the icon in the definition item for each data template, not in the standard values item for the data template. If you only set the icon in the standard values item for the data template, the icon does not apply to the data template itself; the icon shown for the data template in the content tree remains the default icon.

How to Change the Default Icon for All Items

To set the default icon for all items for which the item, its data template, and the standard values item associated with its data template do not define an icon, in the `web.config` file, in the `/configuration/sitecore/settings/setting` with the name `DefaultIcon`, set the `value` attribute to the default icon path.

How to Configure the Icon Selection Menu

To configure the icons that appear in the icon selection menu, edit the file `/App_Config/Icons.config`. Each collection element defines a row, and contains a pipe-separated list of absolute or relative paths to icon files.

3.1.2 Hidden Items

Hidden items do not appear in the content tree for users who do not have permission to show hidden items, or have not chosen to show hidden items.

How to Show or Hide Hidden Items

To show hidden items, the user must be an administrator, or a member of either the Sitecore Client Developing role or the Sitecore Client Maintaining role.

To show hidden items:

1. In the Content Editor, click the View tab.
2. In the View group, select or clear the Hidden Items checkbox.

How to Show or Hide an Item

To hide or show an item, the user must be an administrator, or a member of the Sitecore Client Configuring role.

To show or hide an item:

1. In the Content Editor, edit the item.
2. Click the Configure tab.
3. In the Attributes group, click the Hide Item command to hide the item, or click the Make the Item Visible command to show the item.

3.1.3 Protected Items

No user can edit protected items through Sitecore user interfaces.

How to Protect or Unprotect an Item

To protect or unprotect an item, the user must be an administrator or a member of the Sitecore Client Configuring role.

To protect or unprotect an item:

1. In the Content Editor, edit the item.
2. Click the Configure tab.
3. In the Attributes group, click the Protect Item command to protect the item, or click the Unprotect Item command to unprotect the item.

3.1.4 Item Styles

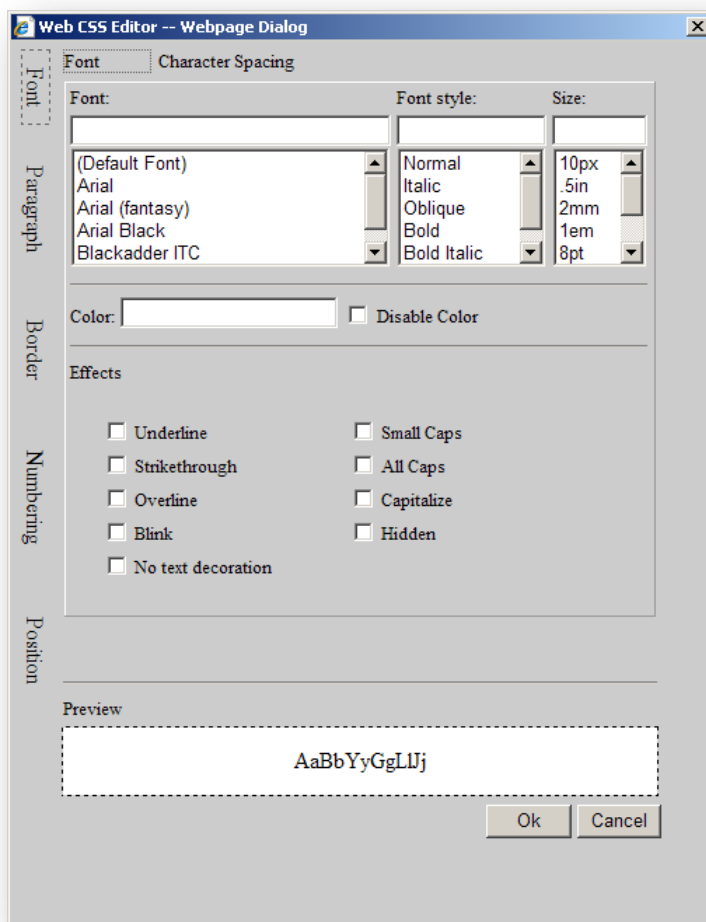
Item styles control the appearance of the names displayed for each item in the content tree. Developers use item styles to highlight and differentiate visually specific items or items based on specific templates. For example, certain system items appear in green text by default, and proxy items to appear grayed out.

To style individual items, developers apply item styles to items. More commonly, developers apply item styles to data templates to style all items based on those templates.

How to Configure the Style of an Item Name in the Content Tree

You can use the tree node style to configure the styling of item names in the content tree. To configure the tree node style for item names:

1. In the Template Manager or the Content Editor, edit the standard values item or the individual item, and then click the Configure tab.
2. In the Template Manager or the Content Editor, with the standard values item or the individual item selected, in the Appearance section, click the Tree Node Style command. The Tree Node Style dialog appears.
3. In the Tree Node Style dialog, style dialog, enter CSS styles, or click the Edit button to use the CSS style wizard. For example, enter `COLOR:red;` to set the color of the font to red.

**Note**

Sitecore uses `COLOR:green` for system items and `COLOR:gray` for proxy shadow items. Avoid using these tree node styles for other purposes.

3.1.5 Display Name

If defined, the display name of an item appears in user interfaces such as the content tree instead of the name of the item.²

Developers use display names:

- To provide helpful item names in the content tree without affecting the default URL for content items.
- To allow characters not allowed in item names to appear in the content tree.

² For information about using display names in URLs, see the Dynamic Links guide at <http://sdn.sitecore.net/Reference/Sitecore%206/Dynamic%20Links.aspx>

Warning

Use display names in limited cases, such as where you must display characters not allowed in item names.

How to Set the Display Name for an Item

To set the display name for an item:

1. In the Content Editor, edit the item.
2. Click the Home tab.
3. In the Rename group, click the Display Name command. The display name prompt appears.
4. In the display name prompt, enter the display name for the item.

3.1.6 Context-Sensitive Help

Editorial interfaces can display helpful information about the selected item and its data template.

Developers use context sensitive help:

- To provide useful information to users working with items based on a specific data template.
- To provide useful information to users working with a specific item.

The item title bar displays the short description defined in the help properties of the item or its data template. When you move the mouse over an item in the content tree, Sitecore displays the long description of the item or its template as a tooltip.

If the developer has not defined any help properties for the item, Sitecore uses the help properties defined in the item's data template.

How to Set Item Context-Sensitive Help

To set context-sensitive help for a data template or an individual item:

1. In the Template Manager or Content Editor, edit the standard values item or the individual item.
2. Click the Configure tab.
3. In the Appearance group, click the Help command. The help properties dialog appears.
4. For Short Description, enter a short description of the type of item or the individual item.
5. For Long Description, enter a long description of the type of item or the individual item.

3.2 Data Template Sections

Each data template contains one or more sections, and each section contains one or more fields. Data template sections allow developers to organize fields into related groups. Organizing fields into sections avoids the appearance of monolithic data entry forms, and allows users to collapse sections of the form that they are not currently using. Developers also use data template sections to contain groups of fields that you can reuse in multiple data templates.

Data templates with large number of sections, and sections with large numbers of fields, can reduce usability and performance. To improve performance, it is especially important to avoid creating data templates with large numbers of Rich Text Editor (RTE) fields. Instead, developers use other field types, or represent the data using a hierarchy of items associated with different data templates.

Logical sorting of data template sections and fields helps users locate the fields they wish to update. Consider sorting sections and fields in the same order that presentation components render field values in page views. Alternatively, place the sections and fields that are most important or updated most frequently towards the top of the data template.

Using appropriate data template section and field names helps users locate the fields they wish to update. For example, if the data template for news articles defines only a few fields such as Author and Date, consider placing those fields in a section named News, and do not use this section name for any fields that are not specific to news articles. Overly general section names such as Data do not provide the same contextual assistance in templates that contain numerous fields.

If a data template and any of its base templates define sections with a common name, the Content Editor renders all the fields in those sections as a single visual section. The sort order property of sections and fields controls their order relative to other sections and fields in the template.

3.2.1 Data Template Section Icons

Data template section headers in the Content Editor display the icons associated with each data template section. Developers specify icons for data template sections to help users locate the fields they want to edit.

Note

If a data template section definition item does not specify an icon, then Sitecore uses the icon specified by the `value` attribute of the `/configuration/sitecore/settings/setting` element in `web.config` with name `DefaultIcon`.

3.2.2 How to Set a Data Template Section Icon

To set the icon for a data template section:

1. In the Template Manager, edit the data template section definition item.
2. Set the icon as described How to Set the Icon for an Item

3.2.3 Data Template Section Sort Order

You can sort data template sections using Template Builder, or by setting the sort order property of a data template section definition item.

Note

To control the order of sections when a data template and its base templates define different data template sections, set the sort order property of data template section definition items.

How to Sort Data Template Sections

To sort the data template sections in a data template:

1. In the Template Manager, select the data template definition item.
2. In the editing pane, click the Builder tab. The Template Builder appears.
3. Click the Builder Options tab.
4. In the Template Builder, click the mouse in the section name to select that section.
5. In the Sorting group, click the Up, Down, First, and Last commands to sort the section relative to the other sections in the data template.

How to Set the Sort Order Property of a Data Template Section Definition Item

To set the sort order property of a data template section definition item:

1. In the Template Manager, edit the data template section definition item.
2. Show the standard fields as described in the section How to Show or Hide the Standard Fields.
3. In the Appearance section, in the Sortorder field, enter a numerical value.
4. Hide the standard fields.

3.3 Data Template Fields

You can use the features described in this section to optimize the usability of data template fields.

3.3.1 Data Template Field Headers and Context-Sensitive Help

The Content Editor displays field headers above each field. Developers use field headers to provide instructions and contextual information to users working with a field value.

Each field header consists of a number of elements, including:

- The field title, which defaults to the field name.
- The token `[standard value]`, if the field contains its standard value.
- The token `[shared]`, if the field contains a value shared to all versions of the item in all languages.
- The token `[unversioned]`, if the field contains a value that is not versioned, but may differ by language.
- Field editing controls appropriate for the field type.

The long description of the field appears when the user moves the mouse over the field title.

For fields that define a help link, the title and short description in the field header link to the specified URL.

How to Set the Title for a Data Template Field

To set the title for a data template field, causing the field label in the Content Editor to differ from the name of the field definition item:

1. In the Template Manager, edit the data template field definition item.
2. In the Data section, in the Title field, enter the title of the field.

How to Set Context-Sensitive Help for a Data Template Field

To set context-sensitive help for a data template field:

1. In the Template Manager, edit the data template field definition item.
2. Click the Configure tab.
3. In the Appearance group, click the Help command. The help properties dialog appears.
4. For Short Description, enter a short description of the field.
5. For Long Description, enter a long description of the field.
6. For Help Link, enter the URL of a resource containing helpful information about the field.

3.3.2 How to Style a Data Template Field

To style a data template field:

1. In the Template Manager, edit the data template field definition item.
2. Click the Configure tab.

3. In the Appearance group, click the Tree Node Style command. The CSS style dialog appears.
4. In the CSS style dialog, in the text field, enter CSS styles, or click the Edit button to use a CSS style wizard. For example, enter `HEIGHT:600px;` to set the height of a Rich Text Editor, or `FONT-WEIGHT:bold;` to style the text in a single-line text field.

3.3.3 Data Template Field Sort Order

Explicitly set the sort order property of data template field definition items to control the order of fields when a data template and its base templates define the same data template sections.

How to Sort Data Template Fields

To sort data template fields:

1. In the Template Manager, edit the data template definition item.
2. In the editing pane, click the Builder tab. The Template Builder appears.
3. In the Template Builder, click the mouse in the field name to select that field.
4. In the Sorting group, click the Up, Down, First, and Last commands to sort the field relative to the other fields in the section.

How to Set the Sort Order Property of a Data Template Field Definition Item

To set the sort order property of a data template field:

1. In the Template Manager, edit the data template field definition item.
2. Show the standard fields as described in the section How to Show or Hide the Standard Fields.
3. In the Appearance section, in the Sortorder field, enter a numerical value.
4. Hide the standard fields as described in the section How to Show or Hide the Standard Fields.

3.3.4 Rich Text Editor (RTE) Configuration

Rich Text Editor (RTE) profiles control the features available in the Rich Text Editor (RTE) fields.

Developers use RTE profiles:

- To remove features from RTE fields.
- To enable default features in RTE fields.
- To expose different features to different users of RTE fields.
- To configure drop-down menus and other options in RTE fields.
- To add custom features to RTE fields.
- To make different features available in different data templates and different RTE fields in a single template.

Developers may reference an RTE profile using the source property of each RTE field definition item. Sitecore stores RTE profiles under `/Sitecore/System/Settings/Html Editor Profiles` in the core database. If the developer does not define the source property for an RTE field, Sitecore applies the `/Sitecore/System/Settings/Html Editor Profiles/Rich Text Default RTE profile`.

Only the definition items that exist in each RTE profile appear in fields using that profile. Access rights assigned to definition items in the RTE profile control access to RTE features for different users.

Tip

For consistency, accessibility, and reusability, separate design from presentation. RTE fields defeat this purpose by merging content with styling, such as CSS styles, and presentation, such as HTML tables and images. In addition to minimizing use of the RTE field type, minimize features available in each RTE field using RTE profiles.

RTE Profile Definition Item Reference

The following table describes items that can appear within an RTE profile definition item.

Path	Function
/Buttons/HTML View	Controls whether or not the HTML tab appears at the bottom of the RTE.
/Class Translation	Maps styling information in content pasted into the pasted into the RTE to corresponding CSS styles.
/Font Names	Populates the font names drop-down menu.
/Font Sizes	Populates the font sizes drop-down menu.
/Links	Populates the Custom Links drop-down menu.
/Paragraphs	Populates the elements drop-down menu.
/Ribbon	Controls the formatting ribbon in the Page Editor.
/Snippets	Populates the snippets feature.
/Tidy	This path has been discontinued.
/Toolbar 1	Controls options on the primary toolbar.
/Toolbar 2	Controls options on the secondary toolbar.
/Toolbar 3	Controls options on the tertiary toolbar.
/WebEdit Buttons	Controls formatting buttons shown beneath the field when inline editing in the Page Editor.
/Zoom	Populates the Zoom drop-down menu.

How to Configure RTE Profiles

To configure RTE Profiles:

1. In the Sitecore Desktop, select the core database.
2. Open the Content Editor and select `/Sitecore/System/Settings/Html Editor Profiles`.
3. In each custom RTE profile definition branch, remove options that are unnecessary for all users, and control the visibility of other options using the `item:read` access right.
4. In the Sitecore Desktop, select the master database.

Important

Do not edit the default RTE profiles under the `/Sitecore/System/Settings/Html Editor Profiles` item in the Core database. Instead, duplicate an existing RTE profile, and configure RTE data template field definition items to use that profile.

Tip

To configure the default RTE profile without editing it, duplicate the default RTE profile to create a backup, and then edit the original.

How to Determine the Path to an RTE Profile

To determine the path to an RTE profile:

1. In the Content Editor in the core database, select the RTE profile definition item.
2. Copy the path to the RTE profile definition item to the Windows clipboard as described in the section [How to Copy the ID or Path of an Item to the Windows Clipboard](#).
3. In the Sitecore Desktop, select the master database.

How to Set the Profile for an RTE Template Field Definition Item

To set the RTE profile for an RTE template field definition item:

1. In the Template Manager, edit the RTE field definition item.
2. In the Data section, in the Source field, enter the path to the RTE profile.
3. In the Sitecore desktop, select the master database.

How to Add Features to an RTE Profile

To add features to an RTE profile, copy features from the `/Sitecore/System/Settings/Html Editor Profiles/Rich Text Full RTE profile definition`.

How to Set the CSS Used by RTE Fields

To set the Cascading Style Sheet (CSS) file used to populate the Apply CSS Class drop-down in all RTE fields:³

1. Close the Rich Text Editor.
2. In `web.config` file, in the `/configuration/sitecore/settings/setting` element with the name `WebStylesheet`, set the `value` attribute to the path to a CSS file.
3. Open the Rich Text Editor to see the change.

How to Limit the CSS Styles Visible in RTE Fields

You can use the CSS `import` directive to prevent styles from appearing in the Apply CSS Class drop-down menu in the RTE.

This Apply CSS Class drop-down includes styles defined in the CSS file specified by the `value` attribute of the `/configuration/sitecore/settings/setting` element in `web.config` with name `WebStylesheet`.

³ For information about loading different CSS files into the RTE, see <http://sdn.sitecore.net/Scrapbook/Dynamically%20loading%20web%20stylesheets%20in%20RTE.aspx>.

Most Web sites use CSS styles that are not relevant to content in the RTE. You can use the CSS `import` directive to prevent these styles from appearing in the Apply CSS Class drop-down in the RTE.

For example, place the styles that users can apply to content in the RTE in the file `contentstyles.css`, and set the `WebStylesheet` setting to the path to that file relative to the document root. Place the styles that should not appear in the RTE in the file `sitestyles.css` in the same directory, and reference that file in your layouts. In `sitestyles.css`, import `contentstyles.css` with a CSS `import` directive such as the following:

```
@import url(contentstyles.css);
```

Only styles defined in `contentstyles.css` appear in the RTE, while presentation components can use styles defined in both `sitestyles.css` and `contentstyles.css`.

Warning

The RTE does not support the CSS `import` directive. Styles defined in CSS files imported by the CSS file specified by the `WebStylesheet` setting in `web.config` will not appear in the RTE.

Warning

Due to various levels of caching, changes to CSS files may not be visible in the browser immediately. If changes to CSS files do not appear, perform the following operations in order until the change appears: reload the Rich Text Editor, clear the browser cache, restart IIS, and change the value of the `value` attribute of the `/configuration/sitecore/settings/setting` element in `web.config` with name `WebStylesheet`.

How to Configure the RTE HTML Element Types Drop-Down Menu

To configure the HTML element types listed in the RTE:

1. In the Content Editor in the core database, under the RTE profile definition item, select `/Paragraphs`.
2. Insert an item using the `/System/Html Editor Profiles/Html Editor List Item` data template.
3. In the Data section, in the Header field, enter the value to display in the elements drop-down.
4. In the Value field, enter the HTML element to insert when the user chooses this element type.
5. In the Sitecore Desktop, select the master database.

How to Enable Snippets in an RTE Profile

To enable snippets in an RTE profile:

1. In the Content Editor in the core database, select `/Sitecore/System/Settings/Html Editor Profiles/Rich Text Full/Toolbar 1`.
2. Copy the `Insert Snippet` item to the corresponding location in the RTE profile.
3. In the Sitecore Desktop, select the master database.

How to Add a Snippet to an RTE Profile

To add a snippet to an RTE profile:

1. Log in to the Sitecore desktop as a user with administrative rights, and then select the Core database. For instructions to select a database, see the section `How to Select a Database in the Sitecore Desktop`.

2. In the Sitecore desktop, click the Sitecore button, and then click Content Editor. The Content Editor appears within the Sitecore desktop.
3. In the Content Editor, select the Snippets item beneath the relevant RTE profile definition item within the `/Sitecore/System/Settings/Html Editor Profiles` branch.
4. In the Content Editor, with the Snippets item within the relevant RTE profile definition item selected, insert a snippet definition item using the `/System/Html Editor Profiles/Html Editor Snippet` data template.
5. In the Content Editor, in the snippet definition item, in the Data section, in the Header field, enter the text to display in the snippets drop-down list.
6. In the Content Editor, in the snippet definition item, in the Data section, in the Value field, enter markup to insert when the user chooses the snippet.
7. In the Sitecore Desktop, select the Master database.

How to Control the Markup Inserted by the Enter Key

The `value` attribute of the `/configuration/sitecore/settings/setting` element in `web.config` with name `HtmlEditor.LineBreak` controls the markup that the Rich Text Editor inserts when a user presses the ENTER key. By default, the `value` of this setting is `p`, causing the Rich Text Editor to surround text with paragraph elements (“`<p> . . . </p>`”). To insert a line break element (“`
`”) at the end of the line instead of wrapping the text with paragraph elements, change the `value` of this setting to `br`.

Note

If the `value` of the `/configuration/sitecore/settings/setting` element with name `HtmlEditor.LineBreak` is `p`, you can insert a line break element (`
`) by pressing CTRL-ENTER. If the `value` of this setting is `br`, you can insert paragraph elements (`<p> . . . </p>`) by pressing CTRL-M.

How to Disable the RTE HTML Tab for Some or All Users

To remove the HTML tab from the RTE:

1. In the Content Editor in the core database, select the RTE editor profile definition item.
2. Delete or restrict read access rights to the `/Buttons/HTML View` item.
3. In the Sitecore Desktop, select the master database.

3.4 Custom User Interfaces in Data Templates

If Sitecore does not provide the data template user interface elements that you need, you can implement custom user interface in data templates.

3.4.1 The IFrame Field Type

The IFrame data template field type enables developers to cause arbitrary Web applications to appear as data template fields when working with items in the Content Editor.

Developers use the IFrame field type:

- To add simple custom field editors to data templates.
- To add reports and other custom applications to data templates.

Fields of type IFrame load the URL specified in the source property of the field definition item into an IFrame in the Content Editor. Sitecore adds the following query string parameters to the URL:

Parameter	Function
id	The GUID of the item selected by the user.
la	The language code selected by the user.
vs	The version number selected by the user.

Developers can pass additional variables by adding query string parameters to the URL specified in the source property of the IFrame field definition item.

How to Create an IFrame Data Template Field

To create an IFrame data template field:

1. Create a web page containing the IFrame user interface. For information about the query string parameters passed to the IFrame field, see the section The IFrame Field Type.
2. In the Template Manger, select the data template definition item.
3. In the editing pane, click the Builder tab. The Template Builder appears.
4. In the Template Builder, add a field of type IFrame, and then save the data template.
5. Edit the IFrame data template field definition item.
6. In the Data section, in the Source field, enter the URL of the web page created previously containing the IFrame user interface.

3.4.2 Item Editors

Item editors define alternate user interfaces for working with items in the Content Editor. Developers implement custom item editors:

- To provide arbitrary applications for working with specific items or items based on specific data templates.

- To provide summaries, reports, or other interfaces for individual items or items based on specific data templates.
- To provide a single user interfaces to update a hierarchy of items.

Item editors appear as tabs in the Content Editor when a user selects an item. Each tab in the Content Editor activates a different item editor. Developers can associate any number of item editors with an item or a data template. The standard values item for each data template defines default item editors for all items associated with that template.

The default editor for all items appears as the **Content** tab in the Content Editor. This interface displays field editing controls grouped in sections as defined by the item's data template and its base templates.

Sitecore associates various item editors with specific types of items by default. The Folder item editor for folders defines the **Folder** tab listing existing child items and options to create new child items. The Builder item editor for data templates defines the **Builder** tab for working with the data template sections and fields comprising the template.

Item editors are URL-addressable Web applications. Sitecore manages item editors under `/Sitecore/Content/Applications/Content Editor/Editors` in the core database.

Sitecore passes the following query string parameters to item editors:

Parameter	Function
id	The GUID of the item selected by the user
language	The language code selected by the user.
version	The version number selected by the user.
database	The name of the database containing the item selected by the user.

You can pass additional variables by adding query string parameters in the URL specified in the Url field in the Data section of the editor definition item.

Note

Item editors supersede the Editor property in previous versions of Sitecore.

How to Configure Item Editors

To configure item editors:

1. In the Template Manager or the Content Editor, edit the standard values item or the individual item.
2. Click the Configure tab.
3. In the Appearance group, click the Editors command. The custom editors dialog appears.
4. In the custom editors dialog, in the All tree, expand branches and double-click item editors to add them to the Selected list.
5. To change the order of item editor tabs, in the Selected list, select an item editor and click the arrows at the right to sort the selection.
6. To remove an item editor, in the Selected list, double-click the item editor.

How to Create an Item Editor

To create an item editor:

1. Create a web page containing the item editor user interface.⁴
2. In the Sitecore Desktop, select the core database.
3. In the Content Editor in the core database, select `/Sitecore/Content/Applications/Content Editor/Editors/Items`.
4. Insert an item editor definition item using the `/Sitecore Client/Content Editor/Editor` data template.
5. In the Data section, in the header field, enter a value that Content Editor should display in the tab that activates the item editor.
6. In the Icon field, enter the icon to display in the tab that activates the item editor.
7. In the URL field, enter the URL of the web page created previously containing the item editor user interface.
8. Save the item editor definition item.
9. In the Sitecore Desktop, select the master database.

⁴ For information about the query string parameters passed to the custom editor, see <http://sdn.sitecore.net/Reference/Sitecore%206/Client%20Configuration%20Reference.aspx>.

3.5 Insert Options

Insert options control the types of items users can insert beneath existing items.⁵

Developers apply insert options:

- To help users create appropriate types of items under existing items.
- To restrict the types of items users can create under existing items.
- To allow different users to create different types of items under existing items.
- To help users create a number of items with a single action in the user interface.
- To create items programmatically, for example, by invoking a wizard.

⁵ For more information about insert options, see the Data Definition Reference manual at <http://sdn.sitecore.net/Reference/Sitecore%206/Data%20Definition%20Reference.aspx> and the Data Definition Cookbook at <http://sdn.sitecore.net/Reference/Sitecore%206/Data%20Definition%20Cookbook.aspx>.

Chapter 4

Data Validation

This chapter provides procedures to configure data validation. Developers use data validation to enforce rules for data entry. This chapter contains the following sections:

- Validation Overview
- Types of Validation
- Validation Error Levels
- Configuring Validation Rules
- Registering Validators
- Custom Validators
- Validation Actions

4.1 Validation Overview

You can configure data validation to control how Sitecore handles invalid data.

You can configure Sitecore to invoke validation rules in the Quick Action Bar, in the Validator Bar, when the user chooses the Validate command in the Proofing group on the Review tab, and when the user chooses a specific workflow command.

Note

In general, select the same validation rules for all four types of validation.

You can configure different validators to for each data template field, for all data template fields of a data template field type, for individual items, for all items based on a data template, and for all items.

Important

For each item, Sitecore invokes the item validation rules defined in the item or the standard values item associated with its data template, as well as global validation rules. For each data template field, Sitecore invokes the validation rules defined in the data template field definition item, as well as the validation rules defined in the data template field type validation rules definition item. The number of validators that the system must invoke for an item affects the server resources used and can affect client performance.

Important

Do not edit the default validator definition items under `/sitecore/system/Settings/Validation Rules`. Instead, register additional validators by creating additional validator definition items.

Note

After you stop editing a field value, Sitecore automatically invokes validation rules asynchronously, and then updates the user interface after validation completes. The `value` attribute of the `/configuration/sitecore/settings/setting` element in `web.config` with name `Validators.UpdateDelay` controls the length of time between the cessation of editing activity and the invocation of the validators. To disable this automatic revalidation feature, set the `value` attribute of the `/configuration/sitecore/settings/setting` element in `web.config` with name `ValidatorsAutomaticUpdate` to `False`.

Note

The default Sitecore configuration disables validation in the Quick Action Bar. To enable Quick Action Bar validation, right-click the Quick Action Bar, and then select Validation Rules.

Tip

Avoid use of the Validation and Validation Text fields in the Data section of field definition items available in earlier versions of Sitecore in favor of the data validation features described in this document.

4.2 Types of Validation

You can validate various types of data.

4.2.1 Data Template Field Validation

You can configure Sitecore to validate the contents of each field in each data template.

4.2.2 Field Type Validation

You can configure Sitecore to validate the contents of each of the different field types.

4.2.3 Item Validation

You can configure validation for individual items.

4.2.4 Standard Validation

You can configure validation for all items based on a data template by configuring validation rules in the standard values of that data template.

4.2.5 Global Item Validation

You can configure validation that applies to all items.

4.3 Validation Error Levels

Validation error levels control the actions Sitecore takes on validation results. Each validator returns one of the following error levels defined in `Sitecore.Data.Validators.ValidatorResult`.

Error Level	UI Color	Function
Unknown	Gray	Validation incomplete or result otherwise unknown.
Valid	Green	Valid.
Suggestion	Green	Suggestions appear in the user interface.
Warning	Orange	Warnings appear in the user interface.
Error	Red	Errors prevent the user from completing workflow commands associated with the workflow validation action.
CriticalError	Red	Critical errors cause a modal warning when the user attempts to save an item and prevent the user from completing workflow commands associated with the workflow validation action.
FatalError	Red	Fatal errors cause a modal warning and prevent the user from saving the item.

4.4 Configuring Validation Rules

You can configure Sitecore to invoke validation rules in the Quick Action Bar, in the Validator Bar, when the user chooses the Validate command in the Proofing group on the Review tab, and when the user chooses a specific workflow command.

4.4.1 How to Configure Quick Action Bar Validation Rules

To configure validation rules to invoke in the Quick Action Bar:

1. In the Content Editor, edit the appropriate validation rules definition item as described in the following sections.
2. In the Validation section, in the Quick Action Bar field, select validation rules.

4.4.2 How to Configure Validate Button Validation Rules

To configure validation rules to invoke when the user clicks the Validate command in the Proofing group on the Review tab:

1. In the Content Editor, edit the appropriate validation rules definition item as described in the following sections.
2. In the Validation section, in the Validate Button field, select validation rules.

4.4.3 How to Configure Validation Bar Validation Rules

To configure validation rules to invoke in the Validation Bar:

1. In the Content Editor, edit the appropriate validation rules definition item as described in the following sections.
2. In the Validation section, in the Validation Bar field, select validation rules.

Note

The validation bar does not appear in Content Editor if the `/configuration/sitecore/settings/setting` with name `ContentEditor.ShowValidatorBar` has a value of `false`.

4.4.4 How to Configure Workflow Validation Rules

To configure validation rules to invoke when the user chooses a workflow command:

1. In the Content Editor, edit the appropriate validation rules definition item as described in the following sections.
2. In the Validation section, in the Workflow field, select validation rules.

4.4.5 How to Create a Workflow Command or State Validation Action

To configure Sitecore to invoke the validation workflow action when the user chooses a workflow command or when the user chooses a workflow command:

1. In the Content Editor, select the workflow state or command.

2. Insert a validation workflow action definition item using the `/System/Workflow/Validation Action` data template.
3. In the Data section, in the Type field, enter the following:

```
Sitecore.Workflows.Simple.ValidatorsAction, Sitecore.Kernel.
```
4. In the Max Result Allowed field, enter the maximum `Sitecore.Data.Validators.ValidatorResult` value the workflow validation action can generate. If validation generates a higher validation error level, the workflow validation action will prevent the user from completing the workflow command. The default value for this field is `Warning`.
5. In the Unkown Result field, enter a message to display to the user if the validator returns `Unknown` as the validation result.
6. In the Warning Result field, enter a message to display to the user if the validator returns `Warning` as the validation result.
7. In the Error Result field, enter a message to display to the user if the validator returns `Error` as the validation result.
8. In the Critical Error Result field, enter a message to display to the user if the validator returns `CriticalError` as the validation result.
9. In the Fatal Error Result field, enter a message to display to the user if the validator returns `FatalError` as the validation result.

4.4.6 How to Configure Validation Rules for All Instances of a Data Template Field Type

To configure validation rules to invoke for all instances of a specific data template field type:

1. In the Content Editor, select `/Sitecore/System/Settings/Validation Rules/Field Types`.
2. Select the existing data template field type validation rules definition item, or insert a data template field type validation rules definition item using the `/System/Validation/Field Type Validation Rules` data template. For the name of the field type validation definition item, use the name of the field type as it appears in the Type field in the Data section of the field type definition item.
3. In the data template field type validation rules definition item, in the Validation Rules section, configure validation rules.

4.4.7 How to Configure Validation Rules for All Items:

To configure validation rules for all items, in the Content Editor, select `/Sitecore/System/Settings/Validation Rules/Global Rules` and configure validation rules.

4.4.8 How to Configure Validation Rules for an Individual Item or All Items Based on a Specific Data Template

To configure validation rules for an individual item or all items based on a specific data template:

1. In the Content Editor or the Template Manager, select the individual item or the standard values item for the data template.

2. Show the standard fields as described in the section How to Show or Hide the Standard Fields.
3. Configure validation rules.
4. Hide the standard fields.

4.4.9 How to Configure Validation Rules for a Specific Data Template Field

To configure validation rules for a specific data template field:

1. In the Template Manager, edit the data template field definition item.
2. Configure validation rules.

4.4.10 Default Item Validators

You can configure item validation rules using the following default validators.

Validator	Function
Broken Links	Identifies invalid references.
Duplicate Name	Identifies items with a name or display name that matches the name or display name of another item under the same parent (case-insensitive).
Full Page XHTML	Checks the validity of the output of requesting the item using the default device.
Media Size Too Big	Identifies media too large to serialize for database storage.
Url Characters	Checks item names for characters requiring escape sequences in URLs.

Note

XHTML validators validate the XML against the schema defined by the `value` attribute of the `/configuration/sitecore/settings/setting` element in `web.config` with name `XHtmlSchemaFile`.

4.4.11 Default Field Validators

You can configure field validation rules using the following default validators.

Validator	Function
Broken Links	Identifies invalid references.
Is Email	Identifies invalid email addresses.
Is Integer	Identifies invalid integers.
Is XHTML	Checks validity of field against local XHTML schema.
Max Length 40	Identifies field values containing more than 40 characters.

Validator	Function
Rating 1 to 9	Identifies invalid integers, negative numbers, and values greater than nine.
Required	Identifies empty fields.
Spellcheck	Identifies fields containing spelling errors.
W3C XHTML Validation	Identifies invalidity against remote W3C validation service.
Alt Required	Identifies missing Alt text in media library image data templates.
Extension May Not Start with a Dot	Identifies media items with a dot character in the field named extension, which is invalid.
External Link Target	Identifies external links in Rich Text Editor fields that should open in a new browser window and provide a title.
Image Has Alt Text	Identifies image fields that do not contain alternate text and that reference media items that do not contain alternate text.
Image Has Alt Text from Media Library	Identifies image fields that do not specify alternate text and that reference media items that do contains alternate text.
Image Size	Identifies image field that references a media item that exceeds the size limit.
Rich Text Image Size	The width of images used in the Rich Text Editor must not exceed the value of the <code>/configuration/sitecore/settings/setting</code> element in <code>web.config</code> with name <code>Media.MaxImageWidth</code> .

Note

The `value` attribute of the `/configuration/sitecore/settings/setting` element in `web.config` with name `HtmlEditor.ValidatorServiceUrl` controls the URL Sitecore uses for W3C XHTML Validation.

4.5 Registering Validators

You can configure validation rules definition items to use the default validators, or register custom validators.

Important

To maximize the performance of the Sitecore user interfaces, validators that consume significant resources and especially processing time, such as to invoke external services or other potentially long-running operations, should run in separate threads. Using a separate thread allows the system to invoke additional validators before a validator completes. Sitecore will update the user interface as the different validators complete.

4.5.1 How to Register a Validator

To register a field validator:

1. In the Content Editor, select the appropriate project-specific folder under `/Sitecore/System/Settings/Validation Rules/Field Rules` or `/Sitecore/System/Settings/Validation Rules/Item Rules`.
2. Insert a validator definition item using the `/System/Validation/Validation Rule` data template.
3. In the Data section, in the Type field, enter the class signature.
4. In the Parameters field, enter URL-escaped key=value parameters, separated by ampersand characters (“&”).
5. If the validator should run in a separate thread, in the Data section, in the Use Thread field, select the checkbox.

4.5.2 How to Register a Regular Expression Field Validator

To register a regular expression field validator:

1. Register the field validator.
2. In the Data section, in the Type field, enter the following:


```
Sitecore.Data.Validators.FieldValidators.RegexValidator, Sitecore.Kernel
```
3. In the Parameters field, enter the following:


```
Pattern=RegularExpression&Text=Message
```
4. In the Parameters field, replace `RegularExpression` with a regular expression.
5. In the Parameters field, replace `Message` with a message to display if the field does not match the pattern. Sitecore will call `String.Format()` to substitute `{0}` in the message with the name of the field.

4.5.3 How to Register an Integer Field Validator

To register an integer field validator:

1. Register the field validator.
2. In the Data section, in the Type field, enter the following:

```
Sitecore.Data.Validators.FieldValidators.IntegerFieldValidator, Sitecore.Kernel
```

3. In the Parameters field, enter the following:

```
AllowNegative=AllowNegative=Boolean&AllowZero=Boolean
```

4. In the Parameters field, replace `Boolean` with `True` or `False` as appropriate.

4.5.4 How to Register an Integer Range Field Validator

To register an integer field range validator:

1. Register the field validator.
2. In the Data section, in the Type field, enter the following:

```
Sitecore.Data.Validators.FieldValidators.IntegerRangeValidator,  
Sitecore.Kernel
```

3. In the Parameters field, enter the following:

```
Min=Minimum&Max=Maximum
```

4. In the Parameters field, replace `Minimum` with the minimum allowed value for the field.
5. In the Parameters field, replace `Maximum` with maximum allowed value for the field.

4.5.5 How to Register a Maximum Length Field Validator

To register a maximum field length validator:

1. Register the field validator.
2. In the Data section, in the Type field, enter the following:

```
Sitecore.Data.Validators.FieldValidators.MaxLengthFieldValidator,  
Sitecore.Kernel
```

3. In the Parameters field, enter the following”

```
MaxLength=MaximumLength
```

4. In the Parameters field, replace `MaximumLength` with the maximum allowed length of the field value.

4.5.6 How to Register Validators for Specific Items and Items Based on Specific Templates

To register validation rules for specific items and items based on specific templates:

1. In the Content Editor, select `/Sitecore/System/Settings/Validation Rules/Item Rules`.
2. Insert a validation rule definition item using the `/System/Validation/Validation Rule` data template.
3. In the Data section, in the Type field, enter the class signature.
4. In the Parameters field, enter URL-escaped key=value parameters, separated by ampersand characters (“&”).

4.5.7 How to Disable Default Validation Rules

To disable default validation rules for all items:

1. In the Content Editor, select `/Sitecore/System/Settings/Validation Rules/Global Rules`.
2. In the Validation Rules section, configure validation rules.
3. Select `/Sitecore/System/Settings/Validation Rules/Field Types`.
4. Configure validation in field type validation rules definition items.
5. Select `/Sitecore/Templates/System/Media`.
6. Show the standard fields as described in the section [How to Show or Hide the Standard Fields](#).
7. For each of the data templates used for media, click on the data template definition item, then click the Content tab in the editing pane, and in the Validation Rules section, configure validation.
8. Hide the standard fields.

Important

No character in an item name can match the regular expression specified by the `value` attribute of the `/configuration/sitecore/settings/setting` element in `web.config` with name `InvalidItemNameChars`. An item name must match the regular expression specified by the `value` attribute of the `/configuration/sitecore/settings/setting` element in `web.config` with name `ItemNameValidation`. Do not change these two settings.

4.5.8 How to Override the Default Error Level for a Validator

To override the default error level for a validator:

1. In the Content Editor, edit the validator definition item.
2. In the Data section, in the Parameters field, add the following:

```
Result=ErrorLevel
```

3. Replace `ErrorLevel` with the name of the error level in `Sitecore.Data.Validators.ValidatorResult`.

4.6 Custom Validators

This section describes procedures to implement a custom validator.

4.6.1 How to Implement a Custom Validator

A custom validator involves two components: a .NET class and a validator definition item.

4.6.2 How to Implement a Custom Validator

To implement a custom validator:

1. Create a class using the following prototype:

```
using System.Runtime.Serialization;
using Sitecore.Data.Validators;
namespace Namespace.Data.Validators.ItemValidators//TODO:namespace (FieldValidators)
{
    [Serializable]
    public class ClassName : Sitecore.Data.Validators.StandardValidator
    {
        public ClassName(){}//TODO:class name

        public ClassName(
            SerializationInfo info,StreamingContext context):base(info,context)
        {
        }

        public override string Name
        {
            get
            {
                return(GetType().ToString());//TODO:validator name
            }
        }

        protected override ValidatorResult GetMaxValidatorResult()
        {
            return(GetFailedResult(ValidatorResult.Error));//TODO:error level
        }

        protected override ValidatorResult Evaluate()
        {
            if(false)//TODO:validate ControlValidationValue
            {
                return(ValidatorResult.Valid);
            }
            else
            {
                Text = "error message";//TODO:error message
                return(GetFailedResult(ValidatorResult.Error));//TODO:error level
            }
        }
    }
}
```

2. Replace `Namespace.Data.ItemValidators` with the appropriate namespace.
3. Replace all instances of `ClassName` with the class name.
4. Replace `GetType().ToString()` with the friendly name of the validator.
5. Replace all instances of `with` with the appropriate validation error level.

6. Replace `false` with logic to validate the field value in `ControlValidationValue` or the item returned by `GetItem()`.
7. Replace `error message` with an error message.
8. Register the validator.

Important

If the result of `GetMaxValidatorResult()` is `FatalError` or `CriticalError`, Sitecore will block operations such as save or workflow commands in the user interface as appropriate until validation completes. To avoid blocking user interface actions during validation, the `GetMaxValidatorResult()` method of expensive validators should not return `FatalError` or `CriticalError`. Validation Bar and Quick Action Bar validators never block user interface operations.

4.7 Validation Actions

Validation actions represent clickable operations in the user interface to correct validation errors.

4.7.1 How to Create a Validation Action

To Create a Validation Action for a Single-Line Text data template field:

1. Create a class using the following prototype:

```
using Sitecore.Shell.Framework.Commands.ContentEditor.Validators;
namespace Namespace.Shell.Framework.Commands.ContentEditor.Validators//TODO:namespace
{
    public class ClassName:ValidatorCommand//TODO:class name
    {
        public override void Execute(CommandContext context)
        {
            var validator=GetValidator(context);
            if(validator!=null)
            {
                var control = GetControlToValidate(validator);
                if (control!= null)
                {
                    control = control as Sitecore.Web.UI.HtmlControls.Control;
                    if(control!=null)
                    {
                        control.Value=Value;//TODO:logic
                        Validate();
                    }
                }
            }
        }
    }
}
```

2. Replace `Namespace.Shell.Framework.Commands.ContentEditor.Validators` with the namespace of the class.
3. Replace `ClassName` with the name of the class.
4. Replace `Value` with the validated value for the field.
5. In the Content Editor, select `/Sitecore/System/Settings/Validation rules/Field Rules`.
6. Insert a validation action definition item using the `/System/Menus/Menu Item` data template.
7. In the Data section, in the Display Name field, enter the label the user should select in the user interface to invoke the validation action.
8. In the `/App_Config/commands.config` file, insert a new command based on the following prototype:

```
<command name="validator:ClassName" type="Namespace.Class,Assembly"/>
```

9. Replace `ClassName` with the name of the class, and replace `Namespace.Class,Assembly` with the namespace and the class signature.

Important

Because unsaved values are only available in the UI and not in the database, `Sitecore.Data.Items.Item` and other APIs are not available. The API used to validate fields depends on the field type, and may involve JavaScript, such as for values of Rich Text Editor fields.

4.7.2 How to Use a Validation Action

To Use a Validation Action:

1. In the Content Editor, edit an item that violates a validation rule that provides a validation action.
2. In the Validation Bar, right-click the validation indicator, and then select the validation action.

Chapter 5

The Page Editor

This chapter provides describes provides procedures to configure the Page Editor, which provides CMS features such as inline editing and the Design pane.

This chapter contains the following sections:

- Page Editor Overview
- Placeholder Settings
- Page Editor Modes
- Edit Frames
- The Field Editor

5.1 Page Editor Overview

As a user navigates the Web site, the Page Editor superimposes user interface elements that contain editing functions on the items the user selects.

5.1.1 The Design Pane of the Page Editor

In the Page Editor, you can use the Design pane to configure layout details for content items. The Design pane prevents users from binding presentation components other than those expressly allowed using Placeholder Settings.

Note

The Design pane enforces component nesting order, prevents users from attempting to bind presentation components to placeholders that do not exist, and inserts fully-qualified placeholder keys.

5.2 Placeholder Settings

Placeholder settings control which presentation components users can bind to placeholders in the Design pane in the Page Editor. For more information about the Design pane of the Page Editor, see the section [The Design Pane of the Page Editor](#).

Developers use placeholder settings:

- To help users choose appropriate presentation components to bind to placeholders.
- To prevent certain users from binding components to specific placeholders.

Layout details reference placeholders either by placeholder key, or by fully qualified placeholder key.⁶ For example, the fully qualified placeholder key for a placeholder with key `content` in a sublayout bound to a placeholder with key `main` in a layout would be `/main/content`.

Note

The Design Pane of Page Editor uses fully qualified placeholder keys, but layout details do not require fully qualified placeholder keys.

Placeholder settings definition items with names matching placeholder keys automatically apply to those placeholders unless layout details specify placeholder settings. The placeholder settings definition item named `content` automatically applies to all placeholders with the key `content`, including nested placeholders, except where layout details specify placeholder settings. For the name of the default placeholder settings definition item for a placeholder, use the placeholder key. For example, for the placeholder with key `content`, edit the placeholder settings definition item named `content`.

Alternatively, by convention, use the fully qualified placeholder key, replacing slash characters (“/”) with dash characters (“-”). For example, to control the placeholder with key `content` in a sublayout intended bound to a placeholder with key `main` in a layout, insert a placeholder settings definition item named `content`, or insert a placeholder settings definition item named `main-content` and associate this placeholder settings definition item with the fully qualified placeholder key `/main/content` in layout details.

Developers configure placeholder settings using placeholder setting definition items. Developers can control the icon displayed for each placeholder by assigning an icon to each placeholder settings definition item. Developers can restrict which users can bind presentation components to a placeholder by denying write access to the placeholder settings definition item. Developers can enter HTML in the Description field of the placeholder settings definition item to control the tooltip that appears when a user moves the mouse over the placeholder in the Design pane in the Page Editor.

Important

Sitecore does not automatically apply placeholder settings using fully qualified placeholder keys to the corresponding nested placeholders. For example, for the placeholder with fully qualified key `/main/content`, if it exists, the placeholder settings definition item with name `content` applies, but the placeholder settings definition item with name `main-content` does not. To cause different uses of placeholders to apply different placeholder settings definition items, configure placeholder settings for placeholder keys or fully qualified placeholder keys using layout details.

⁶ For more information about layout details and placeholders, see the Presentation Component Reference manual at <http://sdn.sitecore.net/Reference/Sitecore%206/Presentation%20Component%20Reference.aspx>.

5.2.1 How to Create a Placeholder Settings Definition Item

To create a placeholder settings definition item:

1. In the Content Editor, select the `/Sitecore/Layout/Placeholder Settings` item.
2. In the Content Editor, with the `/Sitecore/Layout/Placeholder Settings` item selected, insert a placeholder settings definition item using the `System/Layout/Placeholder` data template. Name the placeholder settings definition item after the key of the placeholder that it controls.
3. In the Content Editor, with the placeholder settings definition item selected, in the Data section, in the Allowed Renderings field, select the presentation components users can bind to the placeholder.
4. In the Content Editor, with the placeholder settings definition item selected, in the Data section, in the Description field, enter a summary of the placeholder. Consider including a graphic indicating the location of the placeholder within the layout or sublayout.
5. In the Content Editor, with the placeholder settings definition item selected, set the icon for the placeholder settings definition item to control the image that appears next to the name of the placeholder in the Design pane of the Page Editor. For instructions to set the icon for an item, see the section [How to Set the Icon for an Item](#).
6. To control which users can bind sublayout and renderings to the placeholder, configure write access to the placeholder settings definition item.

5.2.2 How to Configure Placeholder Settings for a Data Template or an Individual Item

To configure placeholder settings for a data template or an individual item:

1. In the Template Manager or the Content Editor, select the standard values item or the individual item.
2. In the Template Manager or the Content Editor, with the standard values item or the individual item selected, click the Presentation tab.
3. In the Template Manager or the Content Editor, with the standard values item or the individual item selected, on the Presentation tab, in the Layout group, click the Details command. The Layout Details dialog appears.
4. In the Layout Details dialog, under the appropriate device, click the Edit button. The Device Editor appears.
5. In the Device Editor, click the Placeholder Settings tab, and then click the Add button. The Placeholder Settings dialog appears.
6. In the Placeholder Settings dialog, for Key, enter the placeholder key or fully qualified placeholder key.
7. In the Placeholder Settings dialog, for Settings Item, click the Browse button, and then select the placeholder settings definition item.

5.3 Page Editor Modes

Each presentation component executes in a logical page mode depending on the user actions that caused Sitecore to invoke the component.

The modes in which a presentation component may execute include:

- The published Web site.
- The browser-based debugger (with or without profiling and tracing active).
- Page Editor (with or without inline editing active).
- Preview.
- The Design pane of the Page Editor.
- WebEdit classic mode.

Presentation components can generate different output in different modes. For example, a presentation component may populate the HTML `<title>` element with the value of a field. The browser cannot provide inline editing facilities for the HTML `<title>` element. If the page does not use that field elsewhere, then the user cannot edit the field in the Page Editor. In this case, a presentation component used elsewhere on the page can output the value of the field elsewhere on the page if the user is inline editing. As another example, consider a rendering that should not output a `<div>` element if a field value is empty. To provide inline editing for the field, the rendering can output the `<div>` and the field editing control if the field has a value or if the user is in inline editing in the Page Editor.

5.3.1 How to Determine the Page Editor Mode

You can determine the Page Editor mode using the `sc:pageMode()` XSL extension function or properties of the `Sitecore.Context.PageMode` .NET object. For more information about the `sc:pageMode()` XSL extension function and the `Sitecore.Context.PageMode` .NET object, see the section Page Editor Modes.

For example, the following XSL code determines if the XSL rendering is running in any mode of the Page Editor, as opposed to the published site:

```
<xsl:if test="sc:pageMode()/pageEditor">
  <!-- the user is in the Page Editor. -->
</xsl:if>
```

The following C# code determines if the .NET component is running in the context of any mode of the Page Editor, as opposed to the published site:

```
if (Sitecore.Context.PageMode.IsPageEditor)
{
  // the user is in the page editor.
}
```

Note

The user can access multiple modes of the Page Editor simultaneously.

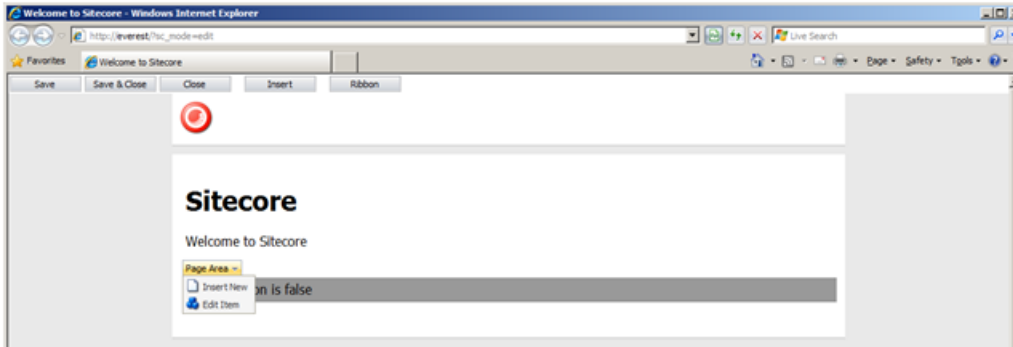
5.3.2 Page Editor Modes

The following table lists the XSL and .NET programming constructs to determine the page mode:

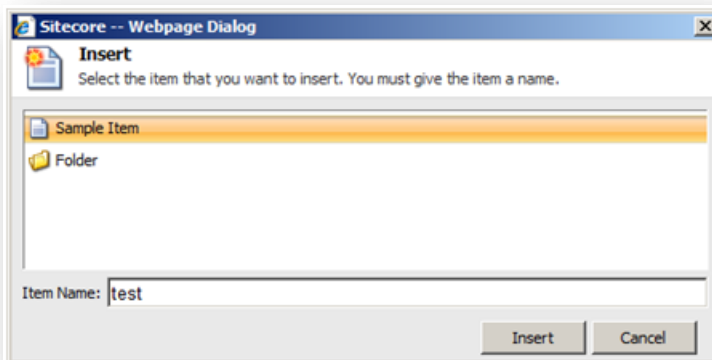
XSL sc:pageMode ()	.NET Sitecore.Context.PageMode	Description of Mode
/pageEditor	IsPageEditor	Accessing the Page Editor.
/pageEditor/classic	IsPageEditorClassic	Using Sitecore 5 classic mode with content markers.
/pageEditor/design	IsPageEditorDesigning	Using the Design pane of the Page Editor.
/pageEditor/edit	IsPageEditorEditing	Inline editing in the Page Editor.
/pageEditor/navigate	IsPageEditorNavigating	Navigating in the Page Editor but not inline editing.
/preview	IsPreview	Previewing.
/normal	IsNormal	Published Web site.
/profile	IsProfiling	Debugging and profiling.
/debug	IsDebugging	Debugging.

5.4 Edit Frames

Edit frames provide insert borders with context menus around markup structures when the user edits inline in the Page Editor. Edit frame commands activate Sitecore user interface commands.⁷ An edit frame generates a `<div>` element with an edit frame menu above it. Each edit frame command in the menu activates a Sitecore command.



The `Buttons` property of the edit frame control specifies an item in the Core databases that contains children representing the edit frame menu items to expose in the edit frame menu. If you do not specify an edit frame menu, Sitecore uses the default edit frame menu defined by the `/Sitecore/Content/Applications/WebEdit/Edit Frame Buttons/Default`. This default edit frame menu contains the Insert edit frame menu command that allows the user to insert an item using the insert options defined for the data source of the edit frame.



For an example of implementing an edit frame, including a custom edit frame command, see the section [How to Implement a Custom Field Editor](#).

⁷ For an example that uses an edit frame to open the field editor, see <http://trac.sitecore.net/DefaultFieldEditor/>.

Note

You can configure the default edit frame menu by setting the `value` attribute of the `/configuration/sitecore/settings/setting` element in `web.config` with name `WebEdit.DefaultButtonPath`.

Note

Sitecore does not support nested edit frames. An edit frame can contain any other controls, including the `FieldRenderer Web` control that generates inline editing controls, but cannot contain other edit frames.⁸

5.4.1 How to Implement an Edit Frame Menu Command

To implement an edit frame menu command:

1. Create an edit frame menu command class that inherits from `Sitecore.Shell.Applications.WebEdit.Commands.WebEditCommand` and implement the `Execute()` method.
2. Add an edit frame menu command definition item to an edit frame menu. For more information, see the section [How to Define an Edit Frame Menu](#).

5.4.2 How to Define an Edit Frame Menu

To define an edit frame menu:

1. In the Sitecore Desktop, use the database icon in the task bar to select the Core database. For instructions to select the Core database, see the section [How to Select a Database in the Sitecore Desktop](#).
2. In the Sitecore Desktop, with the Core database selected, open the Content Editor and select the `/Sitecore/Content/Applications/WebEdit/Edit Frame Buttons` item.
3. In the Content Editor, with the `/Sitecore/Content/Applications/WebEdit/Edit Frame Buttons` item selected, insert an edit frame menu definition item using the `/System/WebEdit/Edit Frame Button Folder` data template.

Tip

Alternatively, you can duplicate the `/Sitecore/Content/Applications/WebEdit/Edit Frame Buttons/Default` edit frame menu definition.

4. In the Content Editor, beneath the new edit frame menu definition item, insert one or more edit frame menu command definition items using the `/System/WebEdit/Edit Frame Small Button` data template.

Tip

You can copy the `/Sitecore/Content/Applications/WebEdit/Edit Frame Buttons/Default/Insert` item to your edit frame menu definition item.

Tip

You can duplicate an existing an existing edit frame menu command definition item and then update its properties.

⁸ For more information about the `FieldRenderer Web` control, see the [Presentation Component Reference manual](http://sdn.sitecore.net/Reference/Sitecore%206/Presentation%20Component%20Reference.aspx) at <http://sdn.sitecore.net/Reference/Sitecore%206/Presentation%20Component%20Reference.aspx>.

Tip

To insert the default field editor edit frame menu command, see the section [How to Use the Default Field Editor](#).

5. In the Content Editor, in each edit frame menu command definition item, in the Data section, set the Header field to the menu label that should appear in the user interface
6. In the Content Editor, in each edit frame menu command definition item, in the Data section, set the Icon field to an icon for the menu item.

Tip

You can also use this icon for the edit frame menu command definition item itself.⁹

7. In the Content Editor, in each edit frame menu command definition item, in the Data section, set the Click field to the UI command the menu command invokes.
8. In the Content Editor, in each edit frame menu command definition item, in the Data section, set the Tooltip field to hover text for the menu item, and then save the edit frame menu command definition item.
9. In the Sitecore Desktop, use the database icon in the task bar to select the Master database. For instructions to select the Core database, see the section [How to Select a Database in the Sitecore Desktop](#).

5.4.3 How to Insert an Edit Frame in a Layout or Sublayout

To insert an edit frame into a layout or sublayout, add code such as the following:

```
<sc:editframe runat="server">
...
</sc:editframe>
```

You can set properties of the edit frame as described in the section [Edit Frame Properties](#).

5.4.4 How to Insert an Edit Frame in an XSL Rendering

To insert an edit frame into an XSL rendering, add code such as the following:

```
<sc:editFrame>
...
</sc:editFrame>
```

You can set properties of the edit frame as described in the section [Edit Frame Properties](#).

5.4.5 Edit Frame Properties

You can set the following properties of an edit frame:

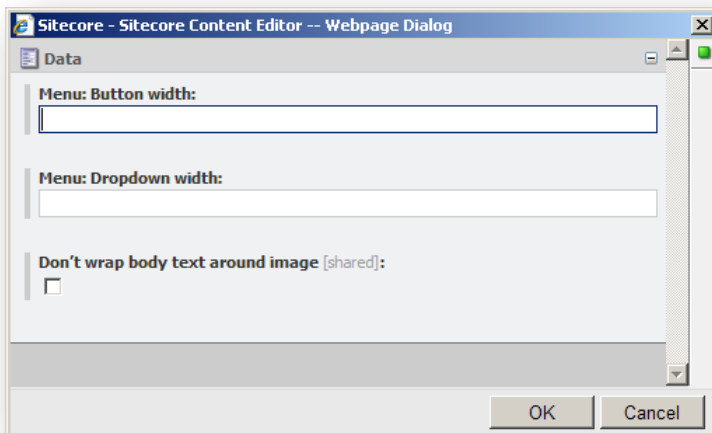
Property (.NET)	Attribute (XSL)	Description
Buttons	Buttons	Edit frame menu items define available commands.

⁹ For instructions to set the icon for an item, see <http://sdn.sitecore.net/reference/sitecore%206/client%20configuration%20cookbook.aspx>.

CssClass	class	Value for <code>class</code> attribute of <code><div></code> element generated by edit frame.
DataSource	select	The item to pass to edit frame menu commands.
Debug	debug	Controls whether Sitecore styles the <code><div></code> element generated by the edit frame.
FramePadding	frame-padding	Expand visible edit frame around contents by number of pixels indicated.
HintOffset	hint-offset	Pixels between edit frame hovering menu and edit frame region.
Style	style	Value for <code>style</code> attribute of <code><div></code> element generated by edit frame.
Title	title	Title of edit frame menu.
Tooltip	Tooltip	Tooltip for edit frame menu.

5.5 The Field Editor

The field editor provides an interface within the Page Editor that allows the user to edit fields for which the Page Editor does not provide inline editing controls. The field editor user interface is highly streamlined in comparison to the Content Editor.



Developers often configure edit frame commands to activate the field editor. For more information about edit frames, see section Edit Frames. Sitecore provides an edit frame command that you can use to activate the field editor to edit the fields that you specify. You can activate the field editor from within the

Page Editor to edit fields that do not provide inline editing controls, or to edit fields from more than one item simultaneously.¹⁰

Warning

The field editor does not enforce item validation.

Important

You must activate the field editor programmatically.

5.5.1 How to Use the Default Field Editor

The default field editor includes the fields that you specify.

To use the default field editor:

1. Define a field editor menu as described in the section [How to Define an Edit Frame Menu](#).
2. In the Content Editor, beneath the field editor menu definition item, insert the default field editor command definition item using the `System/WebEdit/Field Editor Button` data template.

Note

This field editor command definition item invokes the `webedit:fieldeditor` command.

3. In the Content Editor, in the default field editor command definition item, in the Data section, in the Header field, enter Edit Item.
4. In the Content Editor, in the default field editor command definition item, in the Data section, in the Icon field, enter `people/16x16/cubes_blue.png`.

Tip

You can also use this icon for the edit frame menu command definition item itself. For instructions to set the icon for an item, see the section [How to Set the Icon for an Item](#).

5. In the Content Editor, in the default field editor command definition item, in the Data section, in the Fields field, enter the names or IDs of the fields to include in the field editor, separated by a pipe character (“|”).

Note

Field names are not case-sensitive.

Note

Sitecore does not generate an error if the field does not exist.

6. In the Sitecore Desktop, use the database icon in the task bar to select the Master database. For instructions to select the Master database, see the section [How to Select a Database in the Sitecore Desktop](#).

5.5.2 How to Implement a Custom Field Editor

To implement a field editor that includes fields dynamically:

¹⁰ For an example that provides an edit frame menu command to open the field editor including all fields in the item that are not defined in the standard template and do not support inline editing, see <http://trac.sitecore.net/DefaultFieldEditor/>.

1. Create a class that inherits from `Sitecore.Shell.Applications.WebEdit.Commands.FieldEditorCommand`.
2. In the class, implement the `GetOptions()` method to create a list of fields to include in the field editor.
3. In the `GetOptions()` method, pass the list of fields to the constructor for the `Sitecore.Shell.Applications.WebEdit.PageEditFieldEditorOptions` class.
4. In the `GetOptions()` method, set additional properties of the `Sitecore.Shell.Applications.WebEdit.PageEditFieldEditorOptions` object.
5. In the `GetOptions()` method, return the `Sitecore.Shell.Applications.WebEdit.PageEditFieldEditorOptions` object.
6. Add the field editor command to the appropriate edit frame menu definition as described in the section [How to Define an Edit Frame Menu](#).
7. Configure an edit frame in a layout, sublayout, or XSL rendering to use the edit frame menu as described in the section [How to Insert an Edit Frame in a Layout or Sublayout](#) or [How to Insert an Edit Frame in an XSL Rendering](#).

Note

The field editor merges all fields into a single visual section. You can set the `Title` and `Icon` properties of the `Sitecore.Shell.Applications.WebEdit.PageEditFieldEditorOptions` object to control the icon label used for this section. Alternatively, set the `PreserveSections` property to `true` to retain the original section structure.

Note

You can set the `DialogTitle` property of the `Sitecore.Shell.Applications.WebEdit.PageEditFieldEditorOptions` object to control the title of the field editor browser window.

Chapter 6

Security Based Configuration Features

This chapter describes the security features developers can use to optimize the user experience of content authors, including the Sitecore security roles.

This chapter contains the following sections:

- Sitecore Client Security Roles
- Security Presets
- Data Template Field Security

6.1 Sitecore Client Security Roles

Security administrators associate CMS users with one or more Sitecore client security roles to control the features available through the Sitecore user interfaces.

Sitecore applications do not expose every feature to every user. Limiting available features provides a number of benefits, including:

- Reducing the number of user interface elements improves performance and usability.
- Eliminating options prevents users from activating features inadvertently.
- Hiding unnecessary features minimizes training requirements.

A list of the specific features associated with each of the Sitecore roles is beyond the scope of this document.

The following table summarizes the options provided by membership in each of the default Sitecore client security roles:

Role	Function
Sitecore Account Managing	Access to user, role, and domain management features.
Sitecore Client Authoring	Access to content authoring features in the Content Editor, the Page Editor, and the other applications for content authors.
Sitecore Client Configuring	Access to item configuration features in the Content Editor.
Sitecore Client Designing	Access to design features in the Content Editor and the Page Editor
Sitecore Client Developing	Access to the Developer Center and other development features.
Sitecore Client Maintaining	Access to data template management features.
Sitecore Client Publishing	Access to site and item publishing features.
Sitecore Client Securing	Access to the Security Editor and the other features associated with assigning access rights.
Sitecore Client Translating	Access to the content translation features.
Sitecore Client Users	Allows users to log in to Sitecore clients. All of the other Sitecore client roles are members of the Sitecore Client Users role. Users in any Sitecore Client role are automatically members of the Sitecore Client Users role.

Security administrators use the following roles to restrict the features provided by membership of the Sitecore Client Authoring role. Administrators can make less sophisticated users members of these roles after assigning them the Sitecore Client Authoring role.

Role	Function
------	----------

Role	Function
Sitecore Limited Content Editor	Limits features to provide a simplified Content Editor interface.
Sitecore Limited Page Editor	Limits features to provide a simplified Page Editor interface.
Sitecore Minimal Page Editor	Removes the ribbon from the Page Editor.

The following roles simplify security administration by providing default access rights to various branches in the database, as well as including membership of the relevant Sitecore client roles:

Role	Function
Author	Provides access rights to the <code>/sitecore/content</code> branch of the content tree. Member of Sitecore Client Authoring.
Designer	Provides access rights to the areas of the content tree required when making design changes. Member of Sitecore Client Designing.
Developer	Provides access rights to the areas of the content tree required during site development and maintenance. Member of Author, Designer, Sitecore Client Developing, Sitecore Client Maintaining, and Sitecore Client Configuring.

Sitecore also provides default roles to control access to features of the Online Marketing Suite (OMS):

Role	Function
Analytics Content Profiling	Provides access to maintain analytics profiles.
Analytics Maintaining	Provides access to the Marketing Center.
Analytics Reporting	Provides access to Sitecore Analytics reports.

If the default Sitecore roles do not meet your exact requirements for controlling the user interfaces, the access rights in the Core database give more precise control over which features Sitecore exposes to each user or role.

Important

To eliminate unnecessary features in the user interface and minimize the potential for users to invoke features by mistake, users should be members of the fewest possible roles. The only exception to this rule is the limited and minimal roles described previously; users should be members of these roles whenever possible. Most users should only be members of the Sitecore Client Authoring role. When users require additional functionality, security administrators can give them additional roles.

Important

Administrators have access to every feature, regardless of role membership. Minimize the number of administrators.

6.2 Security Presets

Security presets allow users to apply lists of access rights predefined by security administrators to items.

Security administrators use security presets:

- To simplify the process for end-users to apply access rights to content.
- To define common lists of access rights for users to apply to content.
- To provide single-click user interface components to apply lists of access rights that would otherwise require multiple actions.

You can access the security presets in the Content Editor, in the Presets group on the Security tab, and in the Security Editor, in the Presets group.

Tip

To minimize security administration, use security inheritance whenever possible.

6.2.1 How to Create a Security Preset

For the name of the security preset definition item, use a value appropriate for the command in the ribbon that will invoke this security preset.

To create a security preset by defining access rights through the user interface:

1. In the Content Editor, select `/Sitecore/System/Settings/Security/Presets`.
2. Insert a security preset definition item using the `/System/Security/Security Preset data` template.
3. In the Data section, in the Security Preset field, define access rights.

To create a security preset by copying access rights from an existing source item:

1. In the Template Manager or the Content Editor, select the source standard values item or the individual item.
2. Show the standard fields as described in the section How to Show or Hide the Standard Fields.
3. Show raw values as described in the section How to Show or Hide Raw Values.
4. In the Security section, in the Security field, select the value, and then copy it to the Windows clipboard.
5. Hide the standard fields.
6. Select `/Sitecore/System/Settings/Security/Presets`.
7. Insert a security preset definition item using the `/System/Security/Security Preset data` template.
8. In the Security section, in the Security field, paste the value from the Windows clipboard.
9. Hide the standard fields and raw values.

6.2.2 How to Apply a Security Preset

By default, to apply security presets, a user must be an administrator, or a member of the Sitecore Client Securing role.

Apply security presets using Content Editor or Security Editor.

Tip

Use Security Editor when applying access rights to multiple items.

To apply a security preset using Content Editor:

1. In the Content Editor, edit the item.
2. Click the Security tab.
3. In the Presets group, click a security preset command. Sitecore copies the access rights defined in the Security Preset field of the security preset definition item to the selected item.

To apply a security preset using the Security Editor:

1. In the Sitecore Desktop, in the lower left corner, click the Sitecore button, and then click Security Editor. The Security Editor appears.
2. In the Security Editor, select the item.
3. In the Presets group, click the security preset command. Sitecore copies the access rights defined in the Security Preset field in the security preset definition item to the selected item.

6.3 Data Template Field Security

Data template field security separates the security rights that control access to an item from the security rights that control access to the individual field values in that item.

Developers use field security:

- To hide fields in the editing interfaces from some users.
- To make fields in the editing interfaces read-only for some users.
- To allow some accounts to update field values while preventing others from updating those fields.

For example, for search-engine optimization (SEO) purposes, an organization that uses the value of a data template field to populate the HTML `<title>` element may not want all users with write access to other fields to have write access to that field. Only certain users with write access to those items should also have access to update the fields used for SEO. You can meet this requirement with field security.

By default, access rights in the item define access rights to all fields in the item. If a field defines access rights, the user must have explicit field security access as well as access to the item containing the field.

How to Configure Data Template Field Security

To configure data template field security:

1. In the Template Manager, edit the data template field definition item.
2. Click the Security tab.
3. In the Security group, click the Assign command. The access rights dialog appears.
4. In the access rights dialog, grant and deny the field read and field write access rights for one or more accounts.